



# SCHOOLS & JUNIOR OFFERS

Rates & calendar  
2025



Every year since 1912, Institut d'études françaises de Touraine has welcomed students from all over the world to **its historic building in the heart of the Val de Loire region, a UNESCO World Heritage Site**. As a private higher education establishment, it offers immersive teaching of the French language and culture.

Every week, join our group, solo courses, or come and take a more specific course to suit your students objectives :

exam preparation, a DELF/DALF or TEF/DFP passation, a cultural immersion, a school language stay or holiday, an all inclusive junior program, ... Specialized in language stays and didactic courses, we welcome young students aged 12 and over, as well as teachers of French, to create unique immersive programs with a family or in a residence, with visits and activities that are both culturally and linguistically rich. Our dedicated services are at your service.

- FLE, FOS, FOU, FLI courses with syllabuses based on the CEFR.
- FLE Quality label and QUALIOPI certification.
- An online and live level test before your course.
- A level and course certificate.
- Dedicated staff for courses, accommodation and outside activities.
- A wide choice of themes to suit your needs
- Fun, sports and cultural activities



# INTEGRATIVE +16 FRENCH COURSES



- Admission to our level groups every Monday.
- 20h classes Monday to Friday, 9.00-12.20, + **two afternoons** on Tuesdays and Thursdays, 13.30-16.15
- Multicultural groups based on CEFR levels
- Dedicated services for accompanied or unaccompanied minors
- Fun, sports and cultural activities in our outside our campus during afternoon

<b>PRIX / SEMAINE</b>	From 1 to 4 weeks	330 € / week
	From 5 to 18 weeks	280 € / week
	From 19 to 35 weeks	240 € / week
	From 36 weeks and over	Contact us
	Please do not hesitate to contact us for possible discounts.	

## Les +

- Rapid progress in full immersion.
- Various afternoon workshops (cultural, reinforcement, immersion, discovers, fun, thematic workshops, etc.).
- Free tutoring and conversation on wednesday and friday
- Full access to media library resources.

## Details of your learning path

- Online and live placement test before course begins.
- FLE courses based on your CEFR level.
- Certificate of attendance.
- Course and finale evaluations.
- **DELFD/DALF exams** can be taken directly at IEFT.

## Cultural and immersive offers

Would you like to deepen French culture and society knowledge of your students? In addition to courses, we offer unique opportunities to tailor-made your program. Exam preparation, for example? PCTO? Literature? Gastronomy? Sports? Cinema? Journalism? NLD? Let us tailor your stay to your objectives, while improving your French.

**Les +** wide choice of immersive activities to suit your themes and needs

# SUMMER 12-15 FRENCH COURSES



- Admission to our level groups every Monday, **from Monday June 30 to August 18, 2025.**
- 20h classes Monday to Friday, 9.00-12.20, **+ two afternoons** on Tuesdays and Thursdays, 13.30-16.15
- **All inclusive program** : french courses, lunches, sport & cultural activities, accommodation, excursions
- A unique historical campus in the center of Tours

<b>PRIX / SEMAINE</b>	1 week	859 €
	2 weeks	1689 €
	3 weeks	2525 €
	4 weeks	3355 €
Please do not hesitate to contact us		

## Les +

- Full immersion in a small and nice city
- Dedicated staff for supervision
- Various afternoon workshops (cultural, reinforcement, sports, discovers, fun, thematic workshops, etc.).
- Free tutoring and conversation

## Activities example

- interviews with local people, discussions with shopkeepers, discovery of local products
- escape game, treasure hunting, cultural rally,
- football, ping-pong, badminton, volley, slakeline, etc..
- visits to museums, workshops, cinema, etc...
- The châteaux of the Loire, cultural and gastronomic itineraries

## Dedicated staff

The entire team at the institute is ready to meet the needs of young learners. From their arrival to their departure, including the details of their stay, dedicated staff will be there to support them. Whether it's transport tickets, medical appointments, allergies, accommodation problems, etc., our teams meet with them regularly to help them overcome any difficulties.

**Les +** a multilingual team and a network of partners close to the school.

## LANGUAGE STAYS / CLOSED GROUPS



Starting at 12 hours per week, IEFT offers different types of programs depending on your academic needs:

- General French and exam preparation.
- Specific programs tailored to your needs (cultural discovery programs, professional immersion, PCTO, European Baccalaureate, etc.).
- French for specific purposes (FOS)

The Institut d'études françaises de Touraine offers all types of educational establishments wishing to introduce their students to French or improve their French language skills by:

- Creating your own closed group
- Working with our team to design a specific program tailored to your needs.
- Certifying trainees with a DELF/DALF, TEF or DFP diploma.
- Defining your own cultural program and accommodation solutions.

### Quotation on request.

**Contact us:** [contact@institutdetouraine.com](mailto:contact@institutdetouraine.com) or 0033(0)2 47 05 76 83.

### Standard proposal:

15h of specific French with cultural excursions, accommodation with host families, full board weekdays and weekends: **From 495 euros per student for a group of 20.**

### Les +

- Immersed in the heart of Tours - Loire Valley.
- Accommodation in a host family or residence
- Dedicated service and 24-hour assistance.
- Free for accompanying persons.
- Access to all IEFT facilities (garden, media library, foyer, cafeteria, office, etc.).

### Details of a standard proposal

- Transfer from airports to Tours
- Full board weekdays and weekends
- Certificate of attendance.
- Course and finale evaluations.
- Cultural activities (castles, cooking workshops, immersive programs, full day excursions, Paris, etc.).

## PROPOSAL EXAMPLES



	LUNDI	MARDI	MERCREDI	JEUDI	VENDREDI
9h00-10h30	Classe de FLE	Classe de FLE	Classe de FLE	Classe de FLE	Classe de FLE
10h50-12h20	Classe de FLE	Classe de FLE	Classe de FLE	Classe de FLE	Classe de FLE
12h30-13h30	Repas au hameau St Michel	Repas au hameau St Michel	Repas au hameau St Michel	Repas au hameau St Michel	Repas au hameau St Michel
13h30-18h00	Rallye urbain découverte de Tours	Atelier cuisine	13h30 - 18h00 Excursion* (Château, parcs d'attraction, zoo, etc...)	Atelier peinture : devenir artiste	Activités sportive : Les JO de l'IEFT
	Cinema	Blind Test dégustation de fromage		Visite musée des Beaux-Arts	Activités sportive : Les JO de l'IEFT

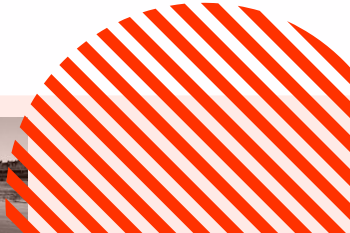
\*Le programme des excursions est encore à valider.

## Time organisation

- Attendance monitoring
- Lunch in the hamlet opposite the Institute accompanied by a tutor
- supervised afternoon activities at the Institute or nearby
- From 6 p.m., supervision in residence or with a host family for more immersion and learning.

## Any questions ?

- Transfer from airports to Tours on quotation
- accommodation and food questionnaire
- French placement test
- Saturdays reserved for full-day excursions
- Evenings and Sundays reserved for family time. Outings, joint activities, sharing, the best of life in France.



# EXAMS



Institut d'études françaises de Touraine is an approved examination center for the French language diplomas and certifications issued by FEI and the French Chamber of Commerce and Industry. Whether you're a student registered with us or a member of the general public, you can take DELF, DALF, TEF and DFP exams here.

## DELF/DALF RATES

- DELF A1 et A2 : 130 €
- DELF B1 et B2 : 140 €
- DALF C1 et C2 : 150 €

A 10% discount applies to students enrolled at the IEFT.



## TEF AND DFP RATES

### TEF, TEFAQ, TEF CANADA

- 4 skills: €140
- Per skill: €25

### TEF IRN

- 110 €

### DFP

- Level A1 and A2 diplomas: €110
- Level B1, B2 and C1 diplomas: €160

### February

- February 11 to 13  
All levels
- Registration from  
13/01 to 17/01.

### March

- March 11 to 13  
All levels
- Registration from  
10/02 to 14/02.

### May

- May 20 to 22  
All levels
- Registration from  
14/04 to 25/04.

### June

- June 17 to 19  
All levels
- Registration from  
12/05 to 16/05.

### July

- July 22 to 24  
All levels
- Registration from  
23/06 to 27/06.

### August

- August 19 to 21  
All levels
- Registration from  
21/07 to 25/07.

### October

- October 7 to 9  
All levels
- Registration from  
08/09 to 11/09.

### November

- November 4 to 6  
All levels
- Registration from  
06/10 to 10/10.

## ACCOMMODATION



Institut d'études françaises de Touraine dedicates a specific service to finding you the accommodation that best suits your needs and expectations. Whether you choose a home-stay, residence, furnished apartment, hotel or youth hostel, you're sure to find your home sweet home!

### Home stay

Our school has a unique network of 150 host families. Benefits: total immersion, friendly atmosphere, daily support.

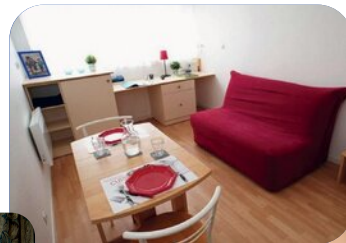
### Hameau Saint-Michel

Located opposite the Institut, this residence offers en-suite rooms, with breakfast, half-board or full-board options. Lunchtime catering available in summer only.

To help you choose the right accommodation your expectations, consult the **"Choosing the right accommodation"** catalogue.

### Activities

To live to the rhythm of Touraine is to feel the historic heartbeat of France and to marvel at it. Every Wednesday and Saturday, the IEFT organizes excursions to discover the unique heritage of our region: visits to castles according to season and theme, tastings of local produce, participatory workshops (cooking, fashion, design, art...), sporting activities and outdoor outings. Come and immerse yourself in France's finest heritage. Your stay will be all the more unforgettable and your French all the richer!



*Sample visit*





# General terms and conditions

## 1. Registration

Minimum age for integrative courses :  
16 years of age on the course start date. Registration online or by e-mail. A deposit of 30% of the total cost of the course. For minors, a parental authorization must be sent. Institut de Touraine declines all responsibility for minors.  
Minors must stay with a host family (half-board).

Administrative costs amount to 100 euros.

## 2. Terms of payment

For stays of less than one month, full payment of tuition fees must be paid at least 30 days before the start of the course. For stays of more than one month, the first month's tuition must be paid in full must be paid in full before the start of the course. For longer stays, a payment schedule is available. Bank charges associated with payment are the responsibility of the customer. Payment must be made in euros.

Can be made by :

### Bank transfer to

**Institut de Touraine**  
**Iban : FR76 3005 6009 5709 5700 0207 620**  
**BIC : CCFRFRPP**  
**Banque : HSBC – CAE Touraine Poitou**  
**11 place Jean Jaurès Tours**

### Credit card: Visa or Mastercard :

[www.institutdetouraine.com](http://www.institutdetouraine.com)

### Secure payment

Upon receipt of payment, Institut de Touraine will send :

- An invoice for the balance due
- A registration certificate
- Accommodation information

## 3. Postponements

The contracting party has the option of postponing one postponement free of charge. From the 2nd postponement onwards, an additional charges will apply:

- 2nd deferral: 100 euros
- 3rd postponement: 100 + 1 week's tuition
- From the 4th postponement: course fees will be retained in full.

## 4. Cancellation

- Cancellation 10 days or more before the start of the course: 30% of the amount paid + registration fee
- Cancellation less than 10 days before course start date: 50% of amount paid + 1 week's tuition

Institut d'Etudes Françaises de Touraine reserves the right to cancel a course in the event of insufficient number of participants. In this case, registration, training and accommodation fees will be reimbursed in full.

## 5. Course interruption

Students wishing to interrupt their training after the course start date are not entitled to any refund of tuition fees for the period. This provision applies to the total duration of the stay indicated on the registration certificate issued by Institut d'études françaises de Touraine.

In exceptional circumstances, partial reimbursement of tuition fees of tuition fees is possible in the following cases:

- Death of an ascendant or direct descendant
- Admission to a degree program (licence, master, doctorate), in a French higher education establishment, which requires early departure.

Proof must be provided: death certificate, certificate of enrolment, etc.

In such cases, Institut d'Etudes Françaises de Touraine retains 30% of the remaining fees (up to a maximum of 4 weeks' tuition).

**No refund, compensation or postponement will be given for any course, hour, day or part of a course not attended.**

## 6. Rules and regulations

Students are required to comply with Institut de Touraine's house rules. If behaviour is of such a nature as to be detrimental to the smooth running of the course (attendance, classes, activities, accommodation) or to the reputation of Institut d'études françaises de Touraine, the student will be excluded immediately, with no right to reimbursement.

**No courses are organized on public holidays. Public holidays do not entitle students to any compensation.**

**All students must take out insurance to cover illness, theft, luggage, etc.**

## 7. Image rights

Institut d'études françaises de Touraine may take photos or videos of students and use them in communication documents, unless the student agrees otherwise.

## 8. Claims

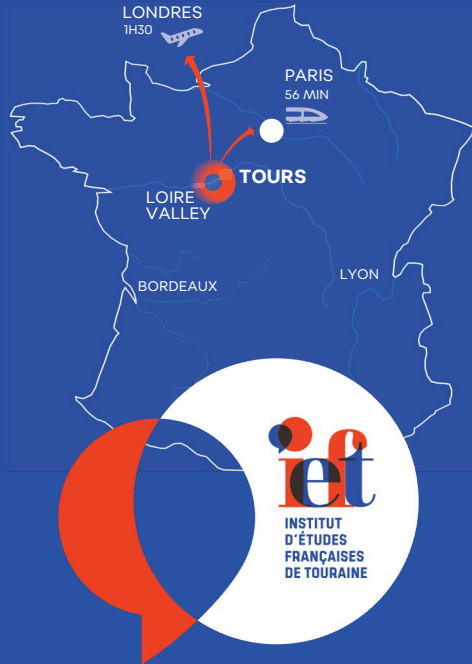
Institut d'études françaises de Touraine undertakes to respond to all requests sent to it by post. In the event of a dispute between the parties, the Tribunal de Tours shall have jurisdiction.

## 9. Opposability

The general terms and conditions of sale form an integral part of Institut d'études françaises de Touraine's training offer. By registering for an Institut d'études françaises de Touraine course, you agree to be bound by these terms and conditions implies full acceptance of Institut d'études françaises de Touraine's general terms and conditions of sale and internal regulations.

In the event of a dispute, the Tribunal de Tours shall have jurisdiction.

# IN THE HEART OF FRANCE



Direct connections to Paris-Charles de Gaulle and Paris-Orly airports. Tours airport makes it easy to get to and from Europe.

At the weekend, visiting Barcelona or Berlin is as easy as discovering Bordeaux, Lyon or Marseille!

1, rue de la Grandière - BP 72047  
37020 TOURS Cedex 1 - FRANCE  
Tél. : +33(0) 2 4705 7683  
Fax : +33(0)2 4720 4898  
contact@institutdetouraine.com  
[www.institutdetouraine.com](http://www.institutdetouraine.com)